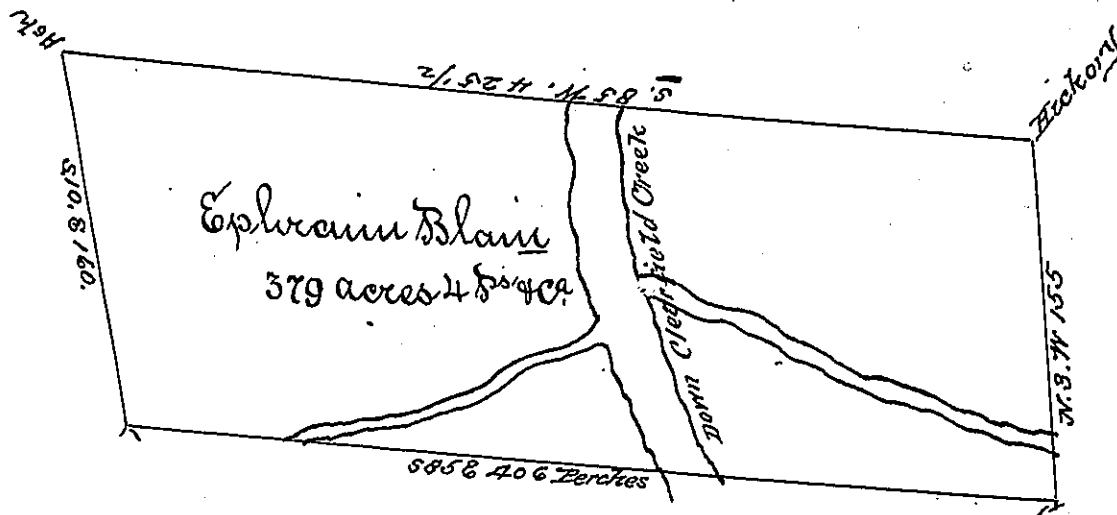


William Hoeller



William Hoeller

M-181

A Draught of a Tract of Land situate on Clearfield Creek in the County of Bedford Containing three hundred and seventy Nine Acres & four Perches & the usual Allowance of six Per Cent. for Roads Surveyed the 1<sup>st</sup> day of November 1784, in Pursuance of a Warrant granted to Ephraim Blaine dated July 1<sup>st</sup> 1784.

To John Calkens Esq. S. G.

George Woods D. D.

IN TESTIMONY that the above is a copy of the original remaining on file in the Department of Internal Affairs of Pennsylvania, made conformably to an Act of Assembly approved the 16th day of February, 1833, I have hereunto set my Hand and caused the Seal of said Department to be affixed at Harrisburg, this third day of May 1898.

*James W. Latta*  
Secretary of Internal Affairs.